



GOLF RIDGE  
PRIVATE ESTATE

AT FILINVEST  
MIMOSA + CLARK

---

FILIGREE

---

Your Window Onto  
A Picture Perfect Landscape



# The Diversity and Connectivity of Filinvest Mimosa+



Golf Ridge sits within a naturally secluded area of Filinvest Mimosa+, a mixed use township within Clark, established worldwide economic center and weekend getaway haven in Central Luzon, Philippines.



## A Private Estate

Golf Ridge is a private estate set within 3.3-hectare that has **unprecedented views** of a lush landscape and a world-class golf course.



# Lush Landscapes, Privileged Views



Featuring century old trees,  
this nature-inspired community  
well integrates green into its  
core proposition.

# Classic Contemporary Architecture



Inherent to its modern design is the blurring of the boundaries between the units and the outdoors, bringing in abundant natural light, refreshing views and better indoor air quality.



# Sophisticated Homes in an Exclusive Private Estate



At Golf Ridge, residents get to enjoy a life well lived with its generous and carefully planned living spaces.

# Country Club Lifestyle



Experience amenities that  
will help you rejuvenate,  
unwind and enhance your  
personal health and well being.





Private Drop - Off



Residential Lobby





# Infinity & Kiddie Pool





Outdoor Lounge





# Function Room



Gym



Game Room





# Building Features

## **Convenience and Services**

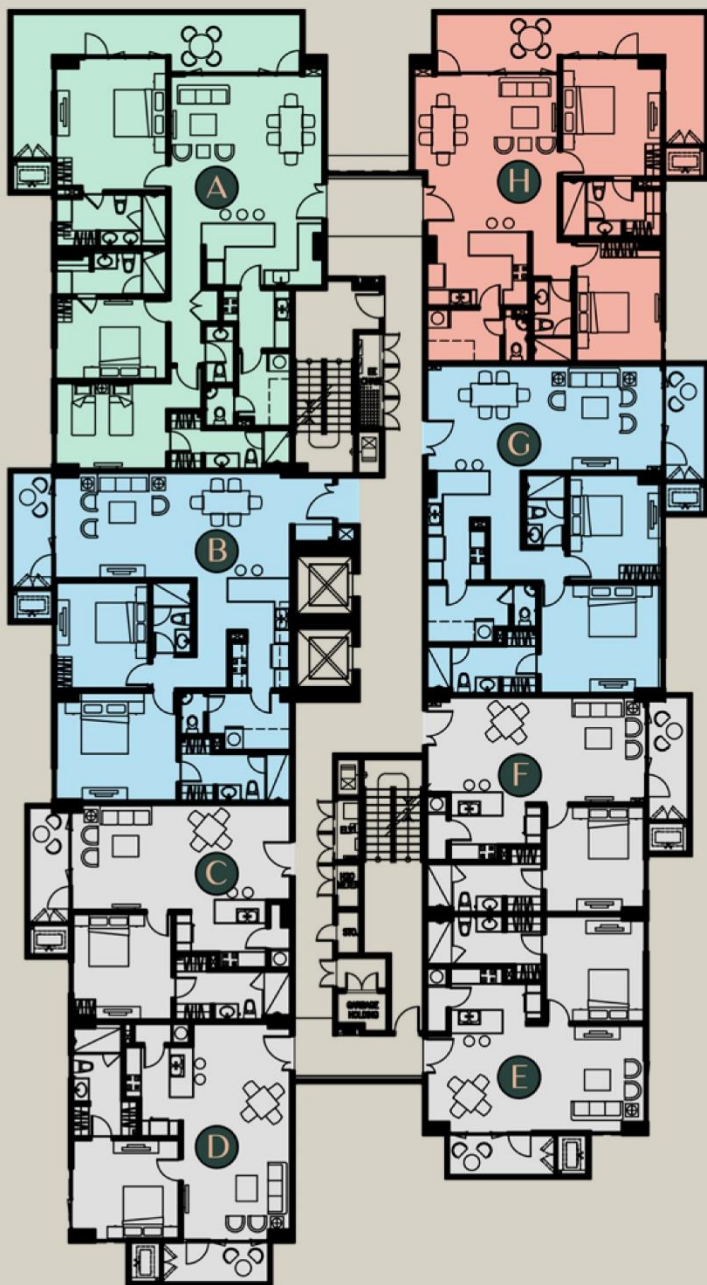
Airconditioned Exclusive Lobby  
Centralized Mailroom  
Property Management Office  
Two (2) High-speed  
Passenger Elevators  
Private drop-off

## **Safety and Security**

24-hr Security Center  
100% Emergency Power Backup  
Fire Detection and Alarm System  
Elevator Keycard Access  
Integrated CCTV Security System  
in the Common Areas



# Typical Level (2nd-15th)



3 BR Fairway Suite



2 BR Premiere

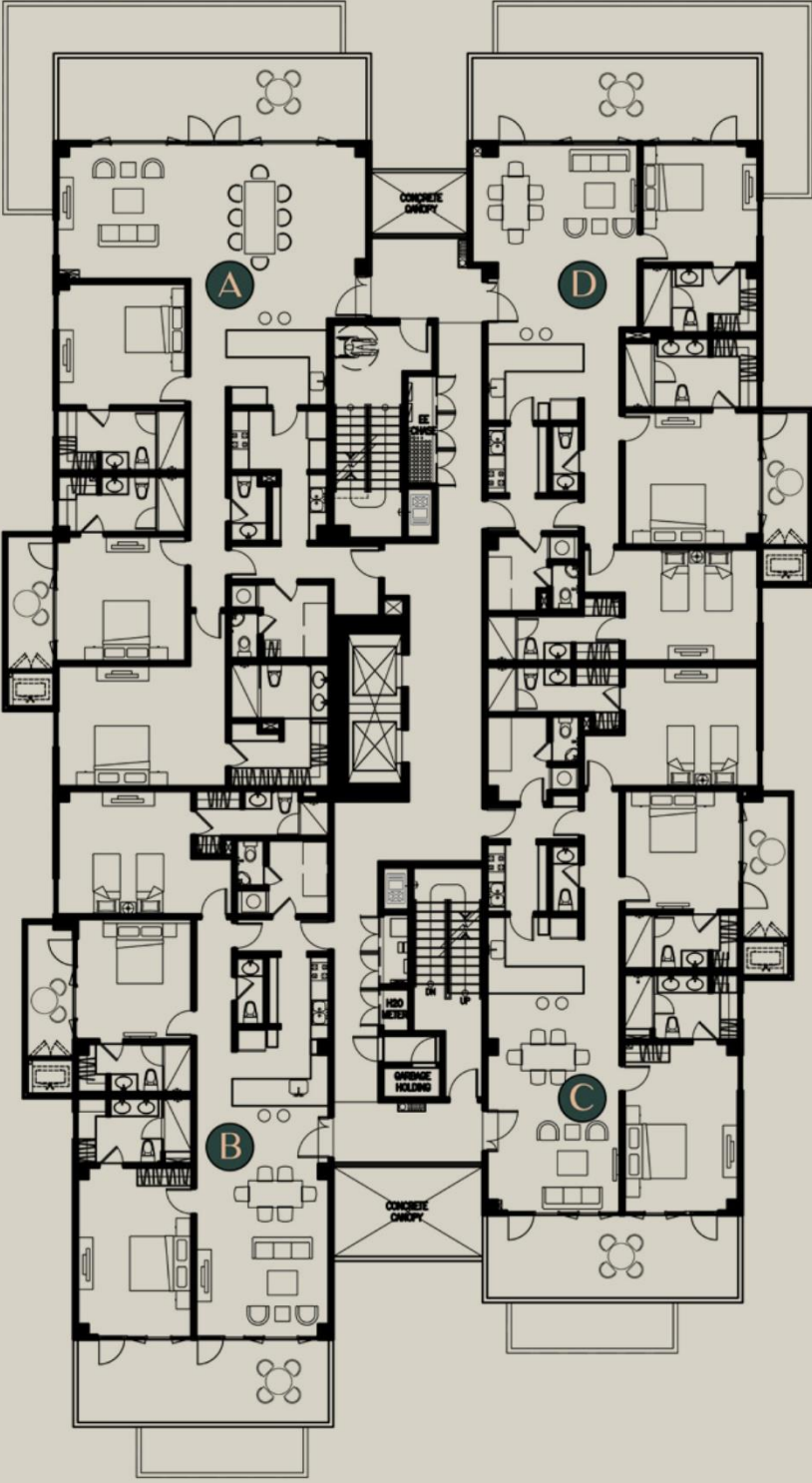


2 BR Classic



1 BR Classic

# Penthouse Level (16th)





# Refined Details

## Bedroom

With Built-in Closets

## Kitchen

Modular Kitchen Base and Overhead Cabinets, Quartstone countertop, Rangehood, Stainless steel sink & faucet with grease trap

## Toilet and Bath

Rain shower and faucet, Shower glass enclosure, Water closet complete with seat and cover & bidet, Quartstone lavatory counter

## Fixtures

Energy efficient multi split type AC, Audio entry phone connected to the reception area

## Provisions

FTTH cable/internet/ telephone parts in all rooms, Multi-point water system for toilet & bath, Washer/dryer

## Floor

Homogenous Tiles  
(Except for utility/maid's room)

## Wall

Painted finish  
(Bedroom/s and Living Areas)  
Homogenous tiles  
(Shower area)

## Ceiling

Painted finish  
(Bedroom/s and Living Areas),  
Painted moisture-resistant gypsum board  
(Toilet & Bath and Kitchen)

## Windows

Operable glass windows and aluminum powder coated frame with tinted glass

## Doors

Solid wood with door viewer  
(Main Door)

## Balcony

Painted Steel Railing



# The Consultants

## ARCHITECTURE

Leandro V. Locsin Partners

## LANDSCAPE

AECOM Singapore Pte Ltd.

## INTERIOR DESIGN

Budji + Royal Design Architects

## STRUCTURAL

Alcantara, Ubay & Co, Inc.

## MEPFPS

Guevara & Partners Inc.

[www.golfridge.com.ph](http://www.golfridge.com.ph)

GOLF RIDGE  
PRIVATE ESTATE

AT FILINVEST  
MIMOSA+ CLARK

FILIGREE